

“Excellence by Choice”

HEATON
ENVIRONMENTAL INC.

SERVICES

What is asbestos ?

Asbestos is the name given to a group of naturally occurring minerals that has been used in certain products, such as insulation, tiles, building materials and vehicle brakes, to resist heat and corrosion. Asbestos includes the mineral fibers chrysotile, amosite, crocidolite, tremolite, anthophyllite, actinolite and any of these materials that have been chemically treated and/or altered. The heaviest exposures tend to occur in the construction industry, particularly during the removal of asbestos during renovation or demolition. Workers are also likely to be exposed during the manufacture of asbestos products (such as textiles, friction products, insulation, and other building materials) and during automotive brake and clutch repair work.

What are the hazards of asbestos?

Asbestos is well recognized as a health hazard and its use is now highly regulated by both OSHA and EPA. Asbestos fibers associated with these health risks are too small to be seen with the naked eye, and smokers are at higher risk of developing some asbestos-related diseases. Breathing asbestos fibers can cause a buildup of scar-like tissue in the lungs called asbestosis and result in loss of lung function that often progresses to disability and death. Asbestos also causes cancer of the lung and other diseases such as mesothelioma of the pleura which is a fatal malignant tumor of the membrane lining the cavity of the lung or stomach.

Signs and Symptoms of asbestosis can include:

Shortness of breath is the primary symptom
A persistent and productive cough (a cough that expels mucus), Chest tightness, Chest pain, Loss of appetite
A dry, crackling sound in the lungs while inhaling.

Indoor Air Quality

Mold Investigation and Assessment
Mold Remediation Design & Implementation
Remediation Risk Assessment
Bacteria Risk and Assessment
Asbestos Inspection & Monitoring
Asbestos Abatement Design and Implementation
Radon
Underground Storage Tanks
Ground & Drinking Water Testing

Specialty Services

Parking Lot Inspection, Assessment & Replacement

Management

Roof Consultation & Project Management
Fuel Storage Tank Installation Implementation
Faulty Design / Catastrophe Assessment & Recovery
Site Development & Implementation

ASBESTOS



REFERENCES

BRUCE ENVIRONMENTAL - BRUCE / JON - 770 439 8908
REMEDICATION GROUP - FRED - 404 214 1470
GEORGIA WATER EXTRACTION - MATT - 770 840 7000
SERVPRO - JEFF - 770 622 9411 / WES - 770 496 1976
KENNY - 770 739 2355 / SCOTT - 770 887 1962
KEITH - 706 896 1880 / BARRY - 770 424 0400
SERVICEMASTER - MIKE / SHERRY / KANDICE - 770 514 1789
REMCO SOLUTIONS - WAYLON - 678 493 3423
STATE FARM - DAVE / DAN / SHANNON - 770 418 6368
BILL / TERRY / ALAN / CHUCK - 770 418 3072
LIBERTY MUTUAL - DERWIN - 770 315 8511
JONATHON - 770 312 4930
PATMAC CONTRACTING - P.C. 770 736 1691
TENCO SERVICES - WESLEY - 770 560 8467

2898 Mountain View Road, Snellville, GA 30078

Tel: 770 931-0918 Fax: 678 344-1540

Email: contact@HeatonUSA.com

www.HeatonUSA.com

“Excellence by Choice”

EPA - NESHAP

National Emission Standard for Hazardous Air Pollutants

For renovation / remediation projects where friable ACM will be disturbed, the NESHAP rule may require appropriate work practices or procedures for the control of emissions. It remains the responsibility of the owner or operator of a building, prior to the commencement of demolition or renovation, to thoroughly inspect the area concerned for :

Regulated Asbestos Containing Material (RACM):

Friable ACM or Non Friable ACM that is or can become friable during the renovation/ demolition activity.

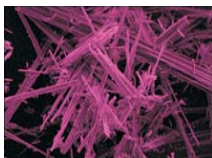
Category I Non- Friable ACM :

Roofing, Flooring, Mastics, Gaskets

Category II Non- Friable ACM :

All others (Asbestos cement Products)

IT IS IMPERATIVE THAT FEDERAL PROCEDURES ARE FOLLOWED AT ALL TIMES WITH REGARDS TO ASBESTOS.



What can be done to reduce the hazards of asbestos?

Worker exposure to asbestos hazards are addressed in specific OSHA standards for the construction industry, general industry and shipyard employment sectors. These standards reduce the risk to workers by requiring that employers provide personal exposure monitoring to assess the risk and hazard awareness training for operations where there is any potential exposure to asbestos. Airborne levels of asbestos are never to exceed legal worker exposure limits. Where the exposure does, employers are required to further protect workers by establishing regulated areas, controlling certain work practices and instituting engineering controls to reduce the airborne levels. The employer is required to ensure exposure is reduced by using administrative controls and provide for the wearing of personal protective equipment. Medical monitoring of workers is also required when legal limits and exposure times are exceeded.

6 Facts about Asbestos :

ONE:

Asbestos , a proven carcinogen, is a naturally occurring mineral which has been used in a wide variety of building materials. Most homes and buildings constructed before 1980 and many constructed before 1990 may have asbestos containing materials in some product or building material.

TWO:

Asbestos has not been completely banned. Asbestos containing materials can be purchased today in the form of sealants and other products.

THREE:

Asbestos can cause diseases such as lung cancer, mesothelioma, asbestosis and other diseases of the lung and chest cavity. Asbestos diseases do not show up immediately following exposure. Most diseases are manifested 15-40 years following exposure. Therefore protecting children from asbestos exposure is critical.

FOUR:

Based on available data, the average airborne asbestos levels , and the associated risk in buildings seems to be very low, unless renovations occur which disturb asbestos containing materials.

FIVE:

EPA-NESHAP is a law that prohibits the disturbance of asbestos containing materials to the point of making it friable. In other words, no asbestos containing material can be damaged to where visible dust could come from the material in its dried state unless a regulated asbestos abatement is taking place.

SIX:

Unregulated removal of asbestos containing materials continue today which puts children, parents, renovators, employees and the general public at risk. The majority of unregulated asbestos removal is conducted through ignorance.

What Should Be Done About Asbestos In The Home?

If you think asbestos may be in your home, don't panic. Usually the best thing is to leave asbestos material that is in good condition alone.

Generally, material in good condition will not release asbestos fibers.

Check material regularly if you suspect it may contain asbestos. Don't touch it, but look for signs of wear or damage such as tears, abrasions, or water damage. Damaged material may release asbestos fibers. This is particularly true if you often disturb it by hitting, rubbing, or handling it, or if it is exposed to extreme vibration or air flow.

Sometimes the best way to deal with slightly damaged material is to limit access to the area and not touch or disturb it. Discard damaged or worn asbestos gloves, stove-top pads, or ironing board covers. Check with local health, environmental, or other appropriate officials to find out proper handling and disposal procedures.

If asbestos material is more than slightly damaged, or if you are going to make changes in your home that might disturb it, repair or removal by a professional is needed. Before you have your house remodeled, find out whether asbestos materials are present.



CONTAINS ASBESTOS FIBERS
AVOID CREATING DUST
CANCER AND LUNG DISEASE HAZARD
AVOID BREATHING AIRBORNE ASBESTOS FIBERS